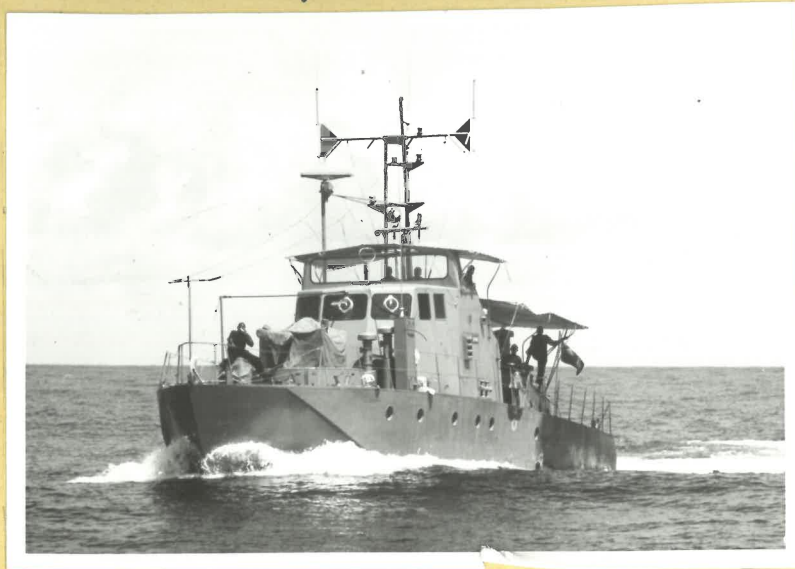


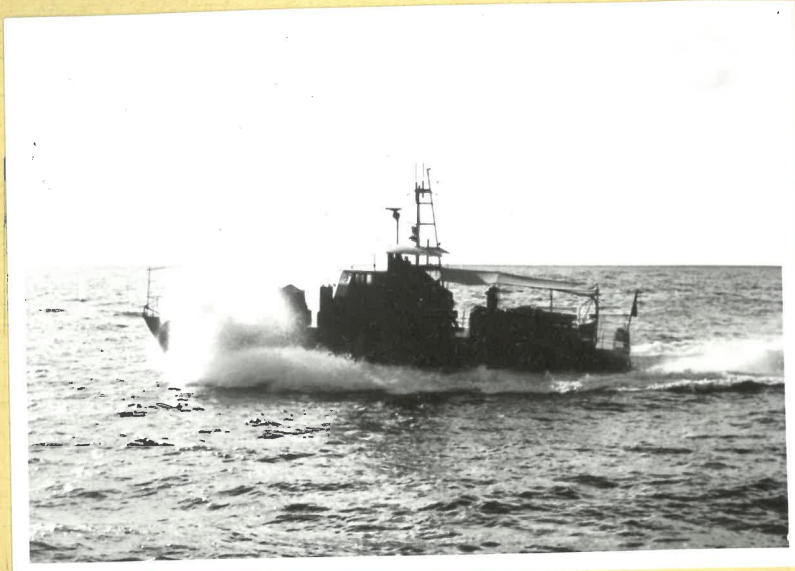
"Uhuru" u. "Rafiki" - Verhalten in Fahrt



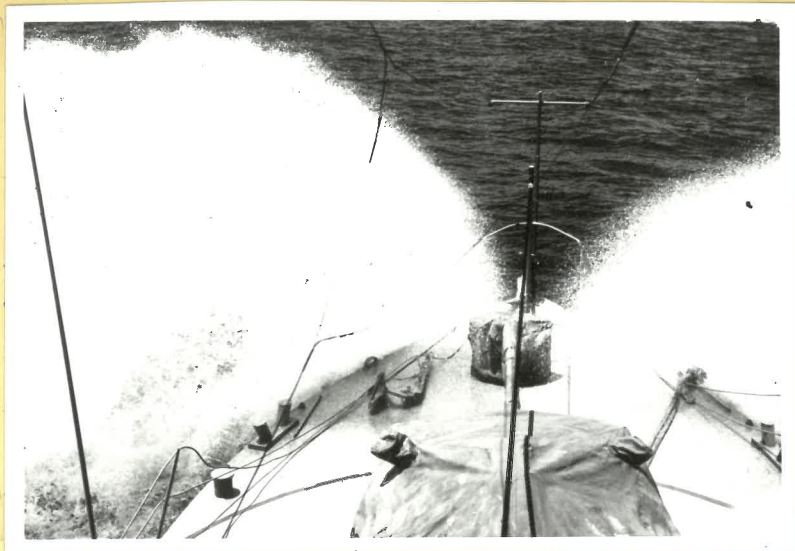
"Uhuru"



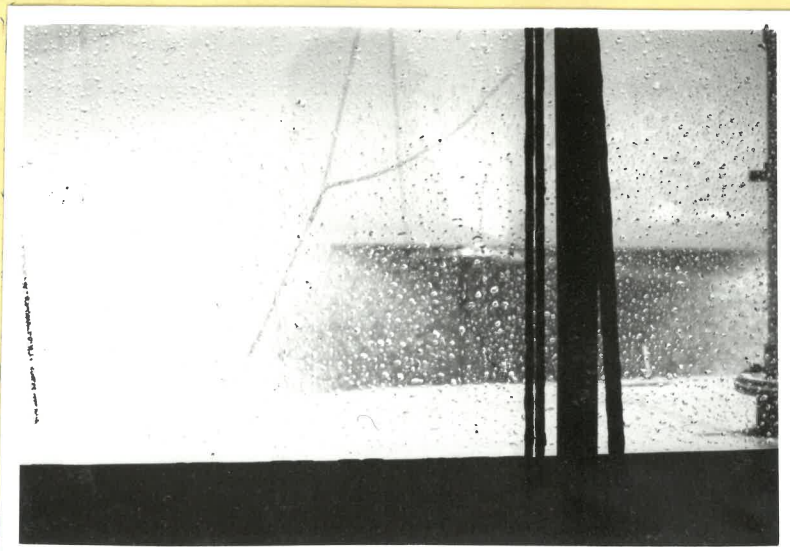
"Rafiki"



"Rafiki" - Seegang 1-2



Speiß-Wasser bei "Uhuru" - 20 Kn. Seegang 1-2



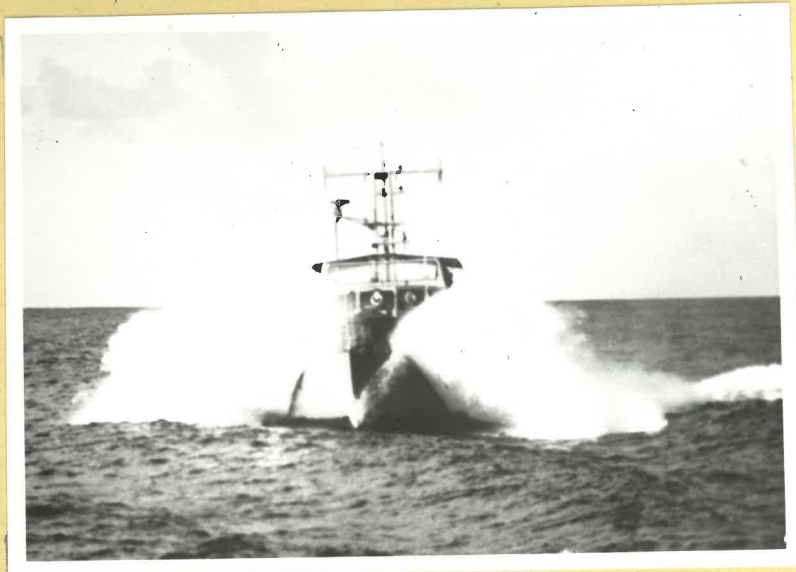
Brückenscheibe der "Uhuru" - 20 Kn. Seegang 1-2

-3-

Sprüh-Wasser bei 20 Kn.



"Uhuru"



"Rafiki"



"Uhuru"